

LIFE WEEE E-NEWS

Waste Electric and Electrical Equipment
Treasures to recover!
LIFE16 GIE/IT/00645



In this newsletter:

We are (almost) done
Page 01

Training in COVID 19 time
Page 02

Activities on the Integrated
Governance Model
Page 03

LIFEWEEE AfterLIFE
Page 04

WE ARE (ALMOST) DONE

Since September 2017, we have almost reached the middle of 2021. In reality, this is not the case. The journey was long, full of challenges and stimulating aspects but also of difficulties. Indeed, at a certain point, COVID 19 put us in front of a very difficult and extremely complicated situation, with our stakeholders who were absorbed day after day by the management of the many emergencies that each one had to face for his own part.

Waste collection managers, Institutions dealing with Governance, businesses, citizens, each of these categories was totally compressed in the need to deal with an emergency whose consequences are still not fully understood.

Even the world of school, for which a specific and detailed part of the communication campaign was planned, seemed unable to go beyond the management of the agitated and dramatic hours of the block of society that we saw materialize in the spring of 2020. This short newsletter tells you about the main issues on which we have worked in recent months that have overwhelmed us a bit, which we have tried to remedy with some adaptation mechanisms.

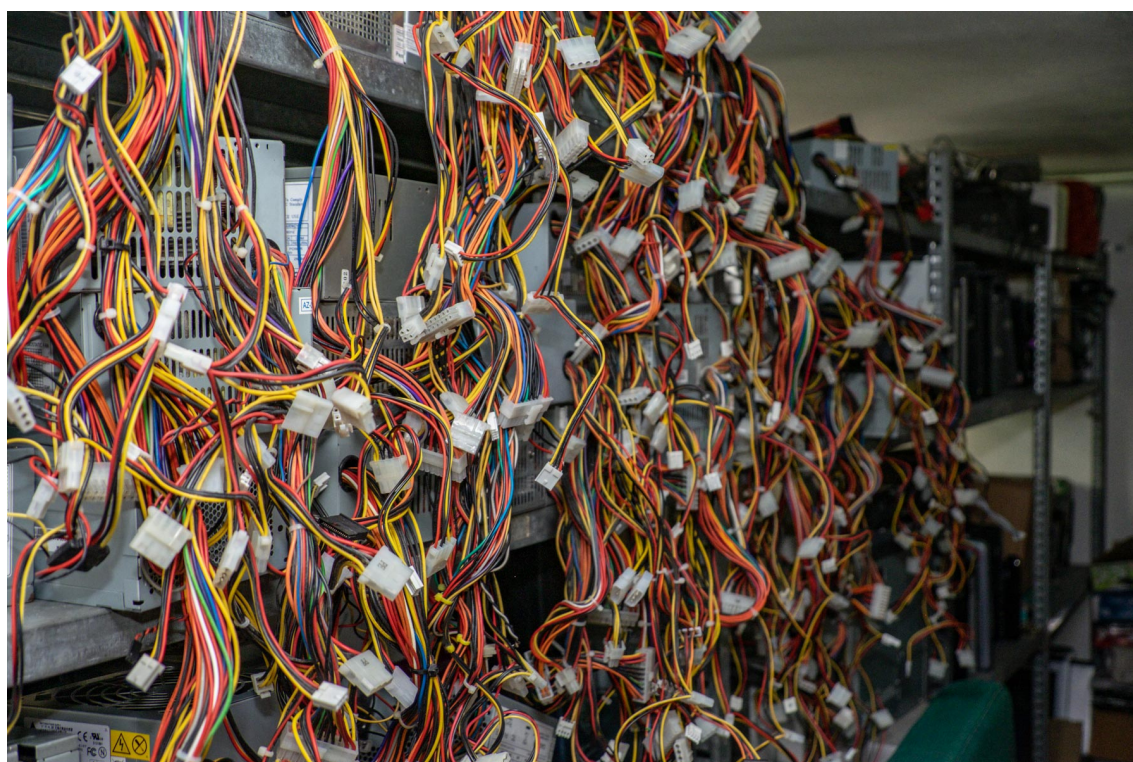
Enjoy the reading.

Training in COVID 19 time

The training obviously needed to adapt to the new containment needs of the pandemic emergency. Both the training dedicated to companies and the training dedicated to the public administration have been rescheduled online.

Due to COVID restrictions, the training for SMEs could not take place during 2020. Therefore these seminars were held online in 2021 until the project end date. The method had the effect, on the one hand, of making the use more complex but on the other hand, for this very reason, a greater focus of the training contents was achieved with respect to the target groups: distributors of EEE, manufacturers and installers of furniture, kitchen, industrial cooling, WEEE and WEEE management professionals in construction companies and public WEEE management companies (public authorities, WEEE collection network).

Even the workshops for high schools as part of the Playground @ school campaign have suffered a slowdown in their performance at the offices - coinciding with the start of the pandemic - up to a complete blockage of activities. The remodeling in online mode had moments of difficulty both in relation to the need to rethink the materials and the agenda of the workshops and in relation to the novelty of having to experiment with the application of an experience that had been deliberately designed in the form of a laboratory in virtual modes. From this point of view, after an inevitable pause, the working group has developed a new format that has been disseminated to some Tuscan schools and in other contexts dedicated to the world of education such as the Didacta Italia Fair 2021 edition.



Activities on the Integrated Governance Model

The process of modifying the regional regulatory framework on the Circular Economy was deeply linked to the LIFEWEEE activity on Action B1: the Regional Council Resolution 20/2019 of 16 December 2019 represented an important step in this process. With this instrument, the Regional Council of Tuscany identified the instrument of the Permanent Governance Committee on WEEE which was subsequently also included in the Tuscan Regional Law on Circular Economy (Law 4 June 2020, n. 34 "Provisions on the circular economy for waste management. Amendments to LR 60/1996). The first meeting of the CGP after institutionalization was held on 29 January 2020: in this plenary session the CGP established the work plan and the calendar of meetings that should have led to guidelines to be used as a useful consultation tool for update the main local planning documents and to improve the WEEE collection system. The events related to the COVID 19 pandemic influenced the work of the Table, which slowed down strongly during the first period of lockdown, as the participants were absorbed by the difficulties of managing their ordinary activities, only after some time did the table start again work, using the online mode. In the autumn of 2020, a program of telephone interviews was undertaken with the aim of analyzing the 4 themes (Communication with the citizen, Training of operators, Revision of municipal regulations and incentive systems for conferment, Territorial experiences of collection points) which had already been identified as those of primary interest for the definition of strategies for improving the WEEE collection system. The activities led to a project deliverable that collects some good practices and examples and possibilities on a system of economic and non-economic incentives that could be applied by the municipalities to stimulate citizens' awareness. At the end of the project, the Technical Roundtable produced and signed a memorandum of understanding which identifies some actions on which the signatories undertake to continue the activity on WEEE. The agreement, also signed by the three ATOs of Tuscany, representing all the Municipalities of the Tuscany Region. In this way, the commitment and adoption of the "LIFEWEEE model" by all the Municipalities of Tuscany is guaranteed. Furthermore, the PGC is working to harmonize the methods of delivery of DUAL USE WEEE to municipal collection centers and a possible related incentive system. The goal is to overcome the inconsistency in the delivery methods of this particular type of municipal collection points. This would therefore facilitate the delivery of WEEE by installers and service centers, further increasing the amount of WEEE collected annually.

www.lifeweee.eu

ufficio.europa@ancitoscana.it

tel 0039 0552477490 fax 0039 0552260538

LIFEWEEE AfterLIFE

As we said at the beginning, we are (almost) done. The AfterLIFE plan is the specific procedure envisaged by LIFE projects to allow the project activities, at least some of them to be, to survive the conclusion of the project activities and to have a continuation, at least in terms of dissemination of the results obtained and ideas.

The objectives of the LIFEWEEE AfterLIFE Plan are:

- Continue the dissemination of project objectives and results in order to ensure dissemination to an ever wider public on a national and international scale;
- Promote guidelines containing good practices for the implementation of the governance model developed by the project;
- Further enhance networking with other funded projects in order to capitalize on the project experience;
- Promote the replicability of the governance model in other territorial contexts.

The actions of the After-Life Communication Plan, which will be detailed below in terms of budget, can be enucleated in the following lines of work:

- Continuous dissemination of the materials produced by the project (Info Kit, Brochure, Guidelines);
- Participation in at least 5 national and international events (eg Ecomondo, National Assembly of ANCI, Didacta);
- Participation in at least 3 Workshops and Conferences;
- Continuation of the activities of the technical panel on WEEE;
- Participation in national and international working groups on the collection and recovery of WEEE also through networking activities using the social and web resources of the channel
- Maintenance and updating of the website and social channels of the project;
- Maintenance and updating of the IT tools developed within the project (Software, App);
- Continuation of networking activities with other funded projects;
- Continuation of the collaboration activities established with the project stakeholders
- Dissemination of didactic and communication materials both in the form of digital products and possibly in the form of traditional products (paper).